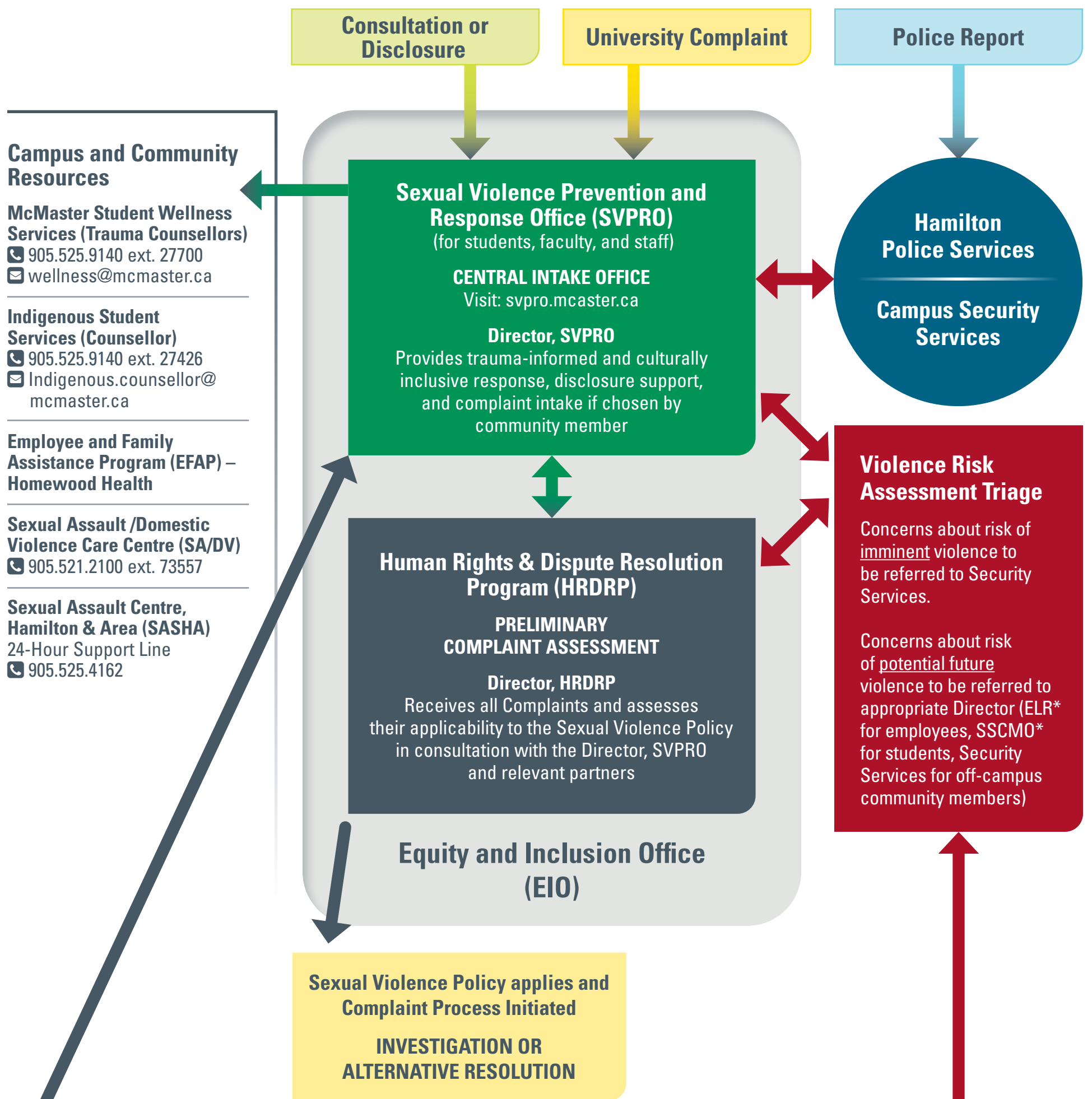


Central Consultative and Complaint Intake Function of the Sexual Violence Prevention and Response Office (SVPRO)



Additional Intake Offices

Provide “warm” referral to SVPRO where possible; liaison for academic and workplace accommodations; consultation on interim measures during investigations; ongoing support and case management as appropriate.

<p>Professionalism Office (PO), Faculty of Health Sciences</p> <p>Where complaint involves a Health Sciences community member</p>	<p>Employee Labour Relations (ELR)*, Human Resource Services</p> <p>Where there is a nexus with employment status or employment policies or collective agreements</p>	<p>Student Support & Case Management Office (SSCMO)*, Student Affairs</p> <p>Where there is a nexus with student status, Code of Student Rights & Responsibilities, or need for student success support</p>
--	--	--

Sexual Violence Response Team

Convened by the Director (HRDR) where a case potentially presents community risk and/or requires consultation with multiple partners for a coordinated response, and will include the Director (SVPRO) and, as appropriate in the circumstances, the Directors of other relevant Intake Offices and other campus partners.